

**TCMS**  
1610 Woodstead Ct. Suite 370  
The Woodlands, TX 77382

[tcms-global.com](http://tcms-global.com)

# TCMS: Whitepaper

Cloud-Based Logistics Solution  
For Container Management Operations

2  
0  
2  
3



**TANK & CONTAINER  
MANAGEMENT  
SYSTEMS**

# TABLE OF CONTENTS

4	TCMS Goals
5	Global Presence
6	Journey Navigator™
7	Our Software
8	Software Con't
9	Our Services



## Statement of Confidentiality

This proposal and supporting materials contain confidential and proprietary business information of TCMS. These materials may be printed or photocopied for use in evaluating the proposed project but are not to be shared with other parties.

W H I T E

P  
A  
P  
E  
R



# TCMS Goals

The goal of TCMS is to help streamline and optimize your supply chains in regards to intermodal movements. Currently, TCMS manages multiple types of container movements, traveling by rail, truck, vessel or air.

TCMS is in a unique position to assist shippers in the management of their container fleet movements. Outside of our experience in the intermodal realm; our partner company Bourque Logistics provides development resources as well as industry knowledge accrued over three decades.

TCMS works with our clients to determine the facilities and staff that operate a client's current logistics flow. We analyze the efficiencies in the existing process, as well as the bottlenecks. TCMS features three software modules that can be utilized in order to close the existing gaps and optimize existing processes. These modules are used for shipment management, while providing transparency and insight via dashboard and reporting tools to our client's personnel on their asset movements.

## MAIN SERVICES PROVIDED

---

- Full ERP record integration and monitoring
- Complete logistics overview and management of container movements
- Asset management and auditing/storage of all container documentation



We will work with you to fully understand your business and your target goals to optimize logistics flow and increase asset utilization.

# GLOBAL PRESENCE



## The Woodlands, Texas

The Woodlands is where our headquarters is based. We reside in the same building as our partner company Bourque Logistics™.

This shared workspace allows us to collaborate and leverage the resources and knowledge of Bourque development staff who has been an industry leader for domestic rail movements for the past 30 years.

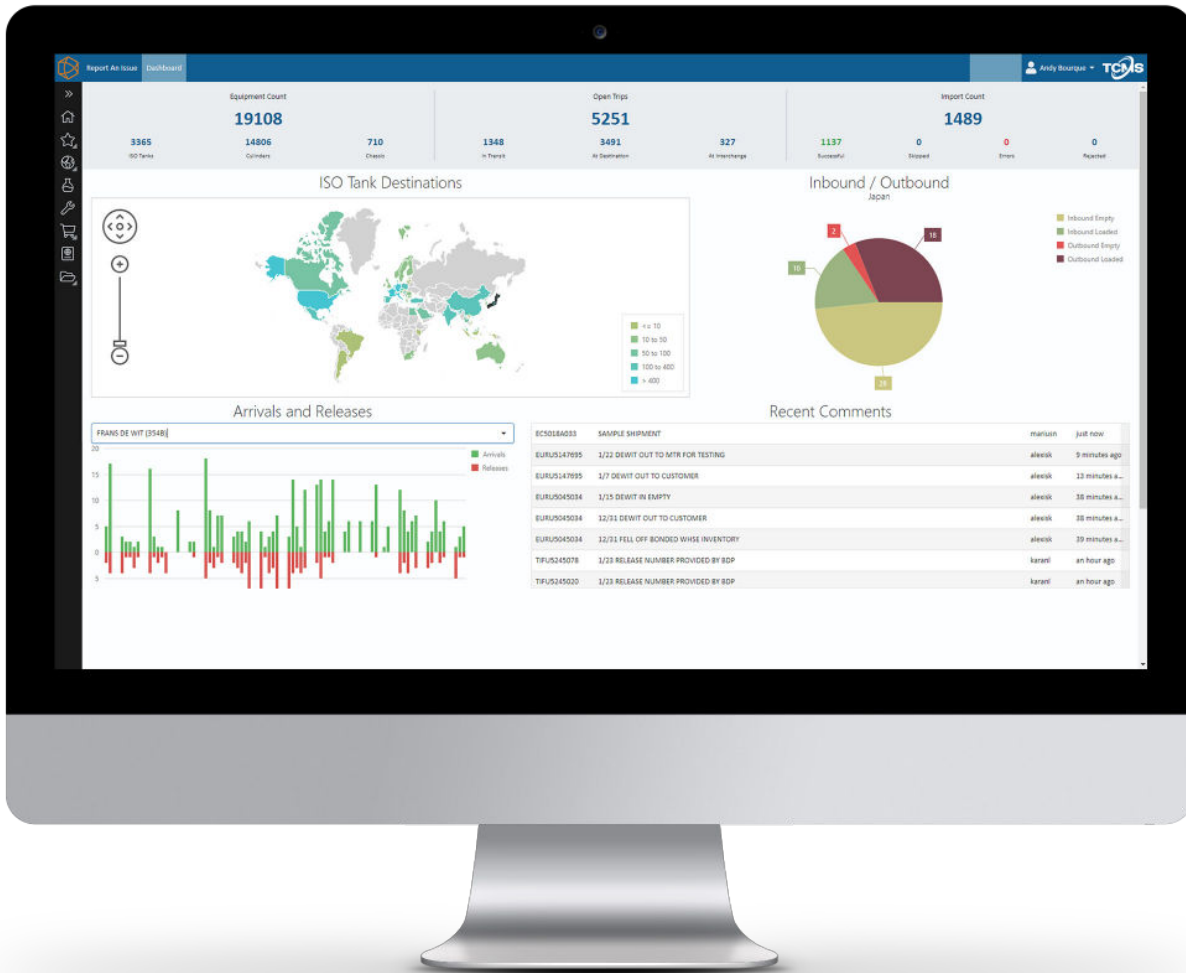
## Burcharest, Romania

TCMS has acquired office space and hired personnel in Bucharest, Romania due to its strategic location and to also provide support in an EU time zone.

Having this location and team allows us to better assist clients with a global presence on an international level. We have plans to grow this office and team over the next year.

## Singapore

Singapore is known as the gateway to the East. With a strategic location, our staff is able to assist, coordinate and provide insight into all APAC movements. This office is headed up by Irene See, who has personally managed intermodal movements in the APAC region for over a decade. We have plans to expand our office and team this year.



Utilizing .NET interfaces and various interactive dashboard components, the TCMS software will allow customers to access a bird's eye view of holistic fleet movement. Or alternatively, drill down to a specific shipment record to view its trip on a segment level.

## JOURNEY NAVIGATOR™ USES

- Tracking and reporting of customer container fleets
- Management of container fleet documentation
- Integration with ERP systems so shipment management flows out of Navigator

# Our Software



We want you to be constantly up-to-date with your fleet while leveraging the TCMS software modules. Below we have outlined in detail what each of our proprietary modules will involve.

## 1 JOURNEY NAVIGATOR™

---

- Store point-to-point truck, vessel, air and/or rail shipments that include equipment number, origin, destination, carrier, routing, equipment phase (loaded, empty, clean), product, quantity and other pertinent delivery information container documentation
- Current and historical equipment status that designates equipment: Loaded In-Transit, to Customer, Customer Waiting for Pickup, Empty In-Transit, Warehouse, Testing, and Plant
- Container mechanical, lease, and compliance testing events including equipment specifications, manufacturer, lease contracts, and test dates. Current and historical equipment documents to include cleaning and test certification, container registration, maintenance and repair records
- Maintenance events that are designated as in-service, off-hire, and testing
- Import and store equipment good issue shipment records from ERP (contingent on ERP Integration)

## 2 JOURNEY CONTAINERDOCS™

---

- A document imaging system
- Used to store and retrieve all pertinent container documents such as certifications, registrations, test certificates, photos, etc

# Software Con't...

## 3 JOURNEY PORTAL™

---

- Provide secure access via customer User IDs specifically assigned to one or more customer ship-to codes
- Report containers in-transit to customer, at customer, ready for pickup from customer, and departed in last 90 days
- Container shipment details such as ship date, consignee arrival, consignee requested pickup, actual pickup, return to origin
- Counts of container disposition at origin, in-transit to customer, at customer, requested pickup, in-transit to origin, lost/sold to customer
- Provide insight on impending return date and countdown for when demurrage/deposit charges take effect (if any)
- Provide pending and past demurrage information such as charges based on hold times and allowance extensions
- Allow customer to designate one or more containers for pick up
- Provide ability to trigger event to create return BOL document in ERP system



# OUR SERVICES

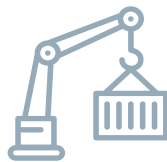
## Container Logistics and Fleet Management

Using the Navigator™ system, Licensor will provide personnel to manage the following logistics and asset management activities regarding the Licensee's container and cylinder fleet:



### MAINTAIN MASTER DATA SETS

- Equipment specifications, manufacturer, and lease contract information
- Test/Clean/Other dates and certificates
- TCMS features an experienced team of maintenance professionals that help manage all of the mechanical, profile and certificate information that surround a container fleet
- Our team offers maintenance services that include managing and reconciling estimates vs actual invoicing for asset repairs, storage and the management of asset leases
- Final costs are determined by our team and exported into client ERP systems for processing
- Our team also helps file, manage and store various fleet documentation in our ContainerDocs software. Offers an easy interface in which to retrieve, download, file and update documentation and dates surrounding these events



### CONTAINER EXPEDITING & LOGISTICS MANAGEMENT

- Our highly trained logistic personnel help to manage and progress shipments, as well as confirm details with various participants in the customer supply chain for accurate and up-to-date information
- These personnel can help to manage your fleet in the Navigator application or provide training to your internal team on how to best utilize the software
- In regards to order management, our team at TCMS can monitor and communicate with your plant facilities
- Their goal is to make visible and available specific assets that are fit to fill specific orders in order to optimize asset utilization
- Our staff is knowledgeable about plant logistics and capable of communicating to plant staff in order to provide increased transparency into plant activities to allow better forecasting and planning



**TANK & CONTAINER  
MANAGEMENT  
SYSTEMS**

**TCMS**

1610 Woodstead Ct. Suite 370  
The Woodlands, TX 77382

**Company Representative**

Andy Bourque  
281-253-5938 | [andyb@tcms-global.com](mailto:andyb@tcms-global.com)

[tcms-global.com](http://tcms-global.com)