

TCMS
1610 Woodstead Ct. Suite 370
The Woodlands, TX 77382

tcms-global.com

TCMS: Whitepaper

Cloud-Based Transportation
Management Solution

2
0
2
5



TABLE OF CONTENTS

4	The Goal of TCMS
5	Global Presence
6	System Structure
7	Our Software
8	Software Cont'd
9	Our Services



Statement of Confidentiality

This proposal and supporting materials contain confidential and proprietary business information of TCMS. These materials may be printed or photocopied for use in evaluating the proposed project but are not to be shared with other parties.

W H I T E

P
A
P
E
R



The Goal of TCMS

The goal of TCMS is to help streamline and optimize your supply chains, make operations more efficient, help control freight and distribution costs, all the while ensuring our clients' assets are in compliance both domestically and globally.

TCMS began 9 years ago as a system to manage shipper owned containers and assets and continues to be best in class at providing these services.

Since then we have seen a natural progression to include other supply chain services our customers find beneficial and now present a full complement of services as a TMS for clients. Outside of our experience in the intermodal realm; our partner company Bourque Logistics provides development resources as well as industry knowledge accrued over three decades.

TCMS works with our clients to determine the facilities and staff that operate a client's current logistics operations. We analyze the efficiencies in the existing process, as well as the bottlenecks. TCMS features multiple software modules that can be utilized in order to close the existing gaps and optimize existing processes. These modules are used for order and shipment management, while providing transparency and insight via dashboard and reporting tools for total landed costs, supply chains, and on their asset movements.

TCMS runs on its proprietary Navigator system which provides the foundation for all other modules to share and track data. TCMS has 6 main modules to aid our clients which cover the following:

- Asset Management
- Order Management
- Tracking and Shipment Management
- Freight and Distribution Expense Audit and Payment
- Tendering and Carrier Management
- Logistics Services
- Document Management
- Dashboard and Reporting

TCMS was founded with a logistics operations mindset. Our desire is to improve operations, create efficiency, and develop the tools to make that happen.

Global Presence



The Woodlands, Texas

The Woodlands is where our headquarters is based. We reside in the same building as our partner company Bourque Logistics™.

This shared workspace allows us to collaborate and leverage the resources and knowledge of Bourque development staff who has been an industry leader for domestic rail movements for the past 30 years.

Burcharest, Romania

TCMS has acquired office space and hired personnel in Bucharest, Romania due to its strategic location and to also provide support in an EU time zone.

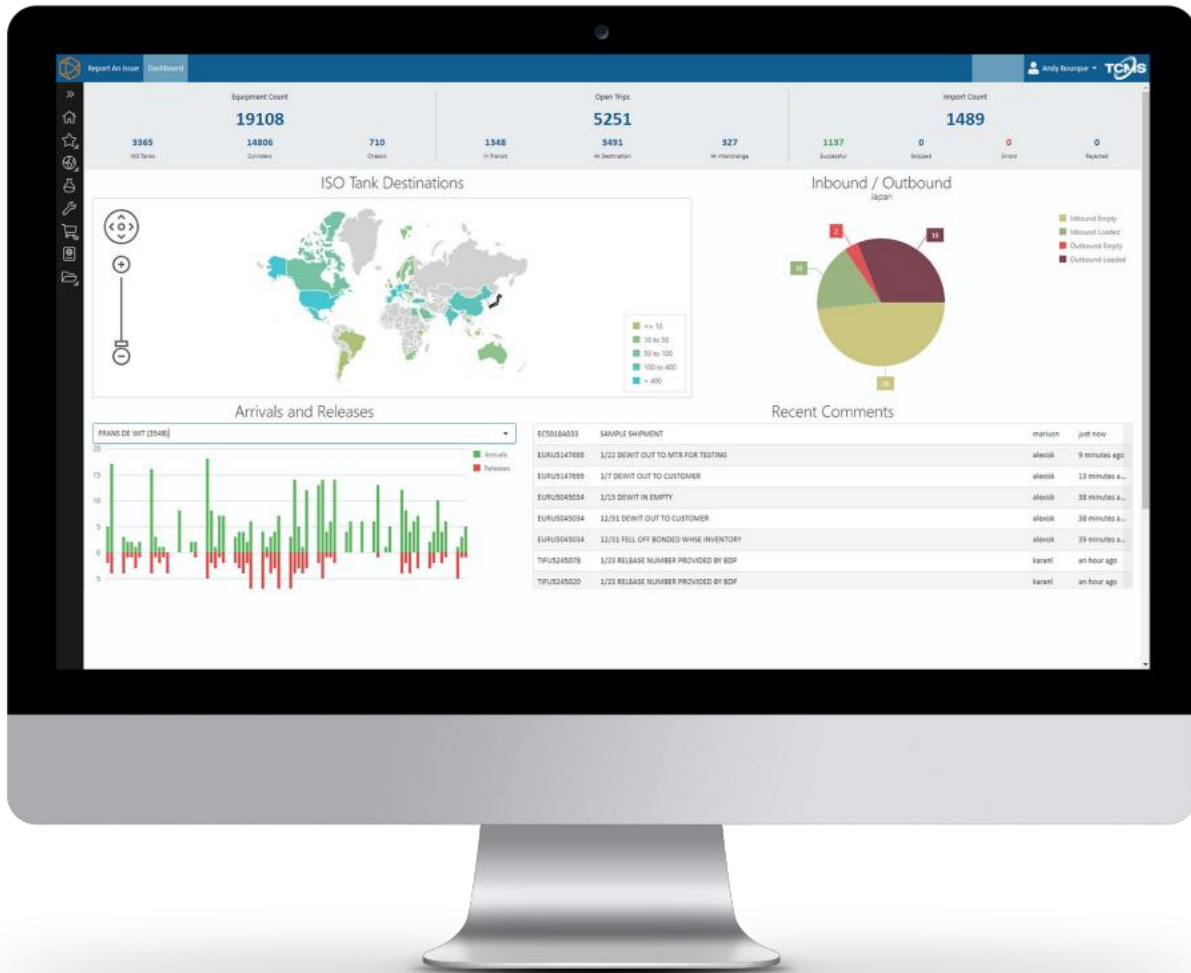
Having this location and team allows us to better assist clients with a global presence on an international level. We have plans to grow this office and team over the next year.

Singapore

Singapore is known as the gateway to the East. Located in such a strategic location, our staff is able to assist, coordinate and provide insight into all APAC movements. This office is led by trusted team members, who have personally managed multi-modal shipments across APAC for a decade.

This team is essential for supply chains originating out of APAC. They will work directly with suppliers to assist in the tracking and timing of D term shipments to our clients.

System Structure



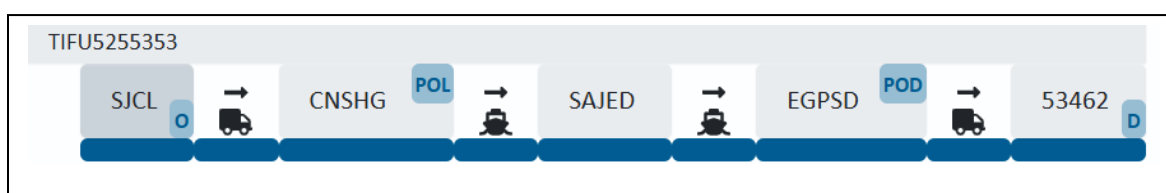
TCMS integrates with all types of ERP systems, WMS, or depot management systems. Whether conventional EDI, API, FTP, or even formatted spreadsheets, TCMS prides itself on its flexibility in obtaining and sharing the data needed to provide the efficiency and transparency our clients require.

SQL based, and utilizing .NET interfaces and various interactive dashboard components, the TCMS software will allow customers to access a holistic view of all of its supply chains and distribution networks so as to be viewed strategically. Every shipment and every transload is also tracked by SKU and Batch Number to provide the granularity needed to make tactical decisions on a daily basis.

Our Software



Journey Navigator is the base system into which all other TCMS Modules integrate, and provides the interface to see individual shipment information or sort and filter that information for analysis. If only one, or many, modules are selected to be utilized, Navigator allows a client to see shipments divided by segment despite the INCO terms, or if the cargo is inbound or outbound.



1 JOURNEY TRACKING™

Available Modules

Integrating with the latest in tracking technologies, this is not just an ETD/ETA tool, Journey Tracking stores all asset data and is combined with point-to-point truck, ocean, air and/or rail shipments that include equipment number, origin, destination, carrier, routing, equipment phase (loaded, empty, clean), product, quantity, and all other data pertinent to an order and its transportation. All data is archived so that historical shipment information can be tracked and trend analysis done. This module has proven excellent not only for tracking, but for managing import compliance, inventory tracking, and duty drawback data as well.

2 JOURNEY CONTROL™

Journey Control is the logistics arm of TCMS. TCMS currently provides Control Centers in APAC, EU, and the Americas to manage the logistics movements of our clients. TCMS will work directly with our clients and their designated 3PLs to expedite the transportation of goods around the world. Our Control Centers also provide reverse logistics services where they serve as a hub for end clients to submit their return requests, and TCMS will expedite those returns using our clients' 3PLs and their contracts.

Software Cont'd...

3 JOURNEY AUDIT™

Journey Audit allows for the audit and payment of all your freight and distribution expenses. Should costs be for freight, leases, maintenance and repair, or even water delivery, TCMS will manage these invoices, provide for audit, approval, and export to our clients' ERP for payment. Audits must complete at minimum a 3-way match to verify the invoice, the invoice must match the expected cost (provided to TCMS either via routing guide or pricing sheet), and get approval for payment prior to TCMS sending the costs via EDI to our customers ERP for posting and payment.

Since TCMS segments all shipments based upon the required transportation, we can also apply the associated costs to those segments as well. So when examining the full trip of cargo from origin to destination, a total landed cost per unit can be provided to include dray moves, ocean moves, fees, intermodal costs, asset costs, or accessorial costs that might have occurred during the full trip from point A to point B.

Once configured with the client, Journey Audit will also allow TCMS to better assist our clients in accrual estimation so that financial pulses and P/Ls can be estimated with more clarity.

TCMS also has the ability to pay these expenses for you. If you feel this is something you may have an interest in, please inquire about our TiPS program.

4 JOURNEY TENDERING™

Journey Tendering will tender to your selected carriers or 3PLs for truck, ocean, air, or rail shipments, and offers routing guide management so that preferred carriers can be prioritized to allow for least cost or service level selection. The module offers multiple methods of connection and data interchange with carriers large and small. Our emphasis is to optimize operations and carrier relations while maintaining accuracy and audit structure.

5 JOURNEY DOCUMENT MANAGEMENT

TCMS has two main methods to store documents. Any documents that pertain to a specific asset can be store in Container Docs. Any documents that pertain to a specific shipment can be stored in Shipper Docs. Both systems archive the data for future use or reference. Container Docs is searchable by the container/trailer/railcar number while Shipper Docs is searchable by the Order, Delivery, or Booking Number.



- Mfg. Certifications / Drawings
- Testing Certifications
- Cleaning Certifications
- Inspection Reports
- Outage Tables

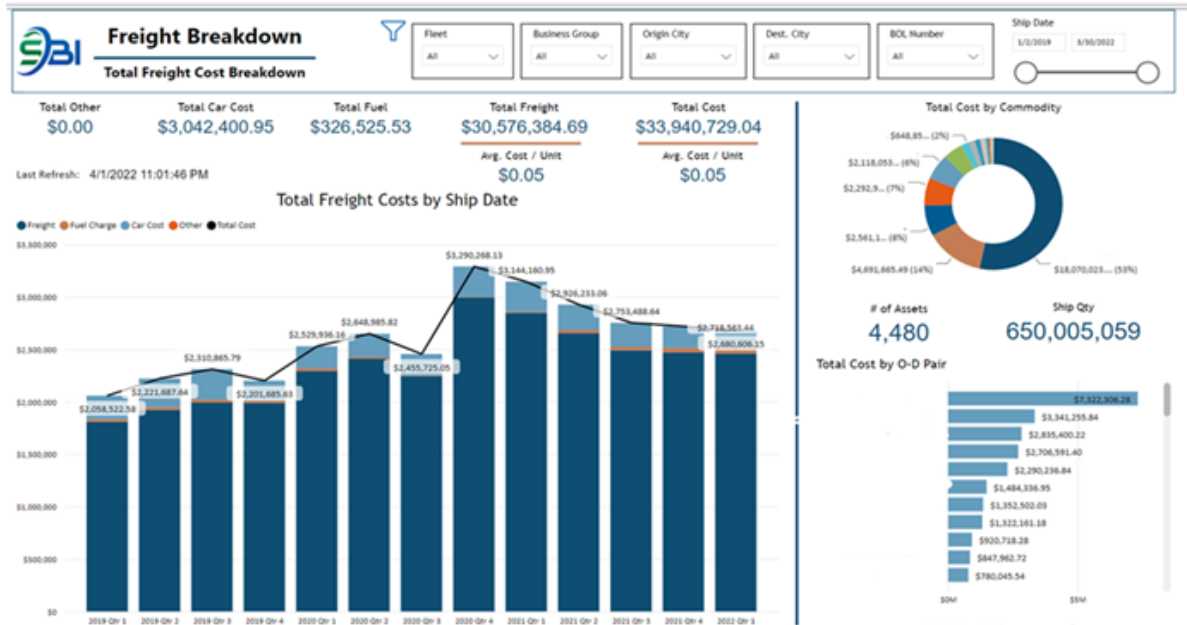
- Bills of Lading
- Commercial Invoices
- Dangerous Goods Declarations
- Packing Lists
- Other Customs Documents



These tools are extremely useful. Should documents be needed by the carrier, the forwarder or broker, for duty drawback, or quota management. These tools give quick access to provide to your customer, auditor, or any other entity or organization that would need quick and easy access to shipping documents. Still leaving a stack of paper at the gate for your carriers? This allows your gate manager to look up by order, print the needed documents immediately on-site, and hand to your carriers.

6 JOURNEY REPORTING

TCMS provides several ways to receive data. Most strategic decision makers prefer to use our ShipperBI dashboard. Based in PowerBI, it provides multiple graphs and charts which allow decision makers to see the efficiency and cost of their supply chain in a single location. TCMS of course works with all our clients to ensure that if they would like to see customized ShipperBI information, that we provide it to them. All underlying data in ShipperBI is exportable.



In addition to ShipperBI, TCMS also uses RailPort technology from Bourque Data Systems so that custom reports can be generated, scheduled for distribution, and provided in an Excel format. This is very useful as a primary step for operational actions such as preparing for vessel arrivals, lining up dray carriers, or ensuring all logistics coordination has been done well in advance of shipping.



**TANK & CONTAINER
MANAGEMENT
SYSTEMS**



TCMS

1610 Woodstead Ct. Suite 370
The Woodlands, TX 77382

Company Representative

Andy Bourque
281-253-5938 | andyb@tcms-global.com

tcms-global.com